



Assemblea nazionale dei delegati FIOM della siderurgia
“FUTURO E RUOLO DELLA SIDERURGIA ITALIANA IN EUROPA: CON QUALE POLITICA INDUSTRIALE?”

L'Industria Siderurgica Europea

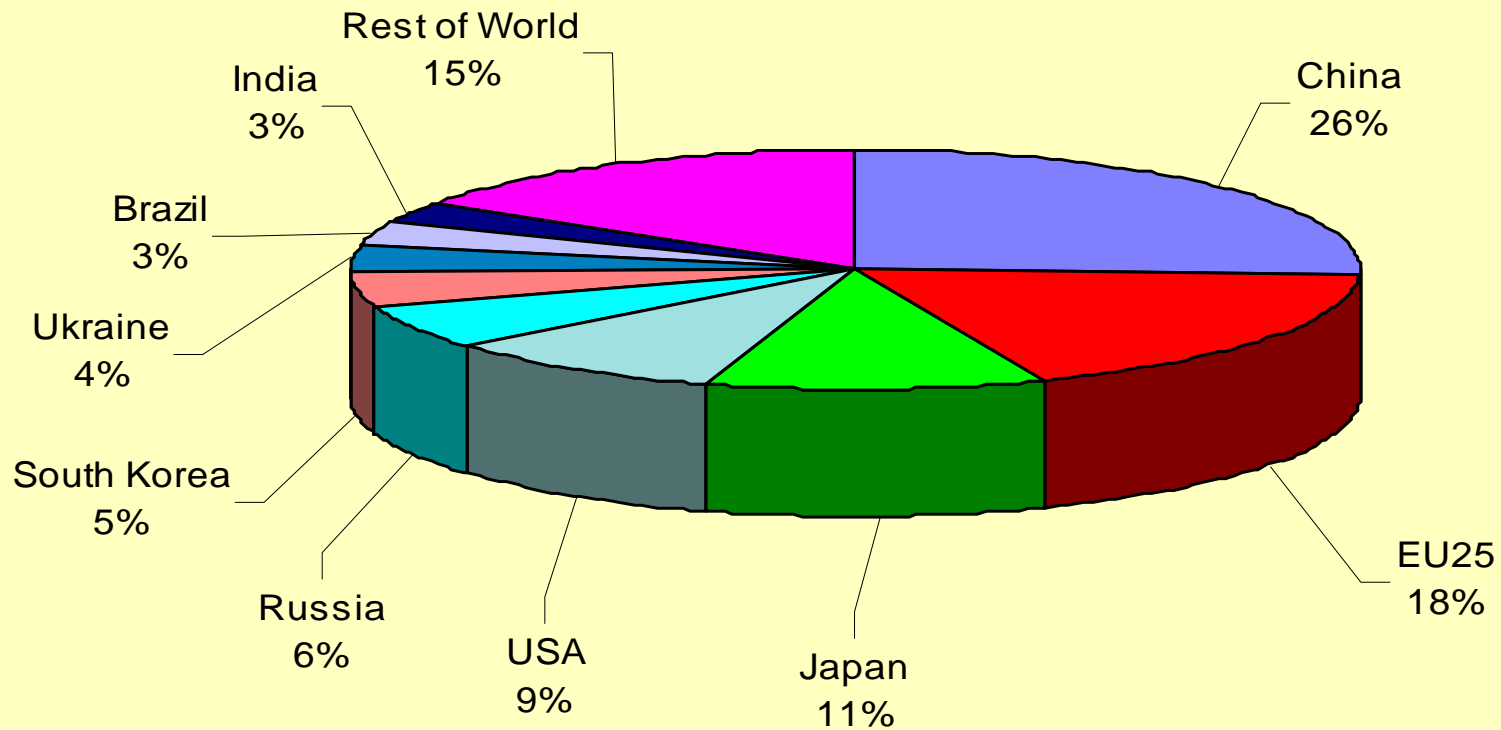
Allegati

Enrico Gibellieri
Esperto della FEM per la siderurgia

Piombino, 23 Settembre 2005

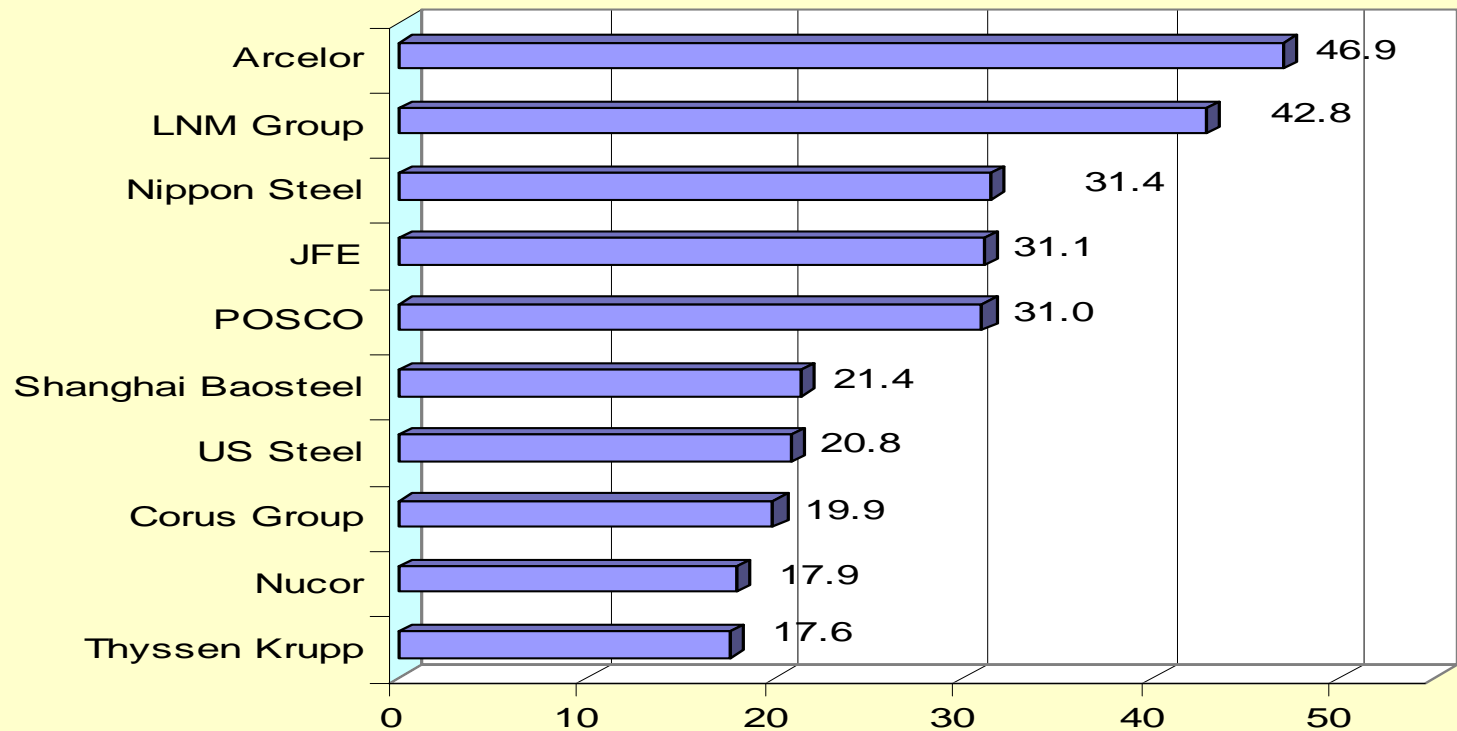
Siderurgia mondiale

Figure 7.3 - Crude Steel Production by Country in 2004
World = 100%



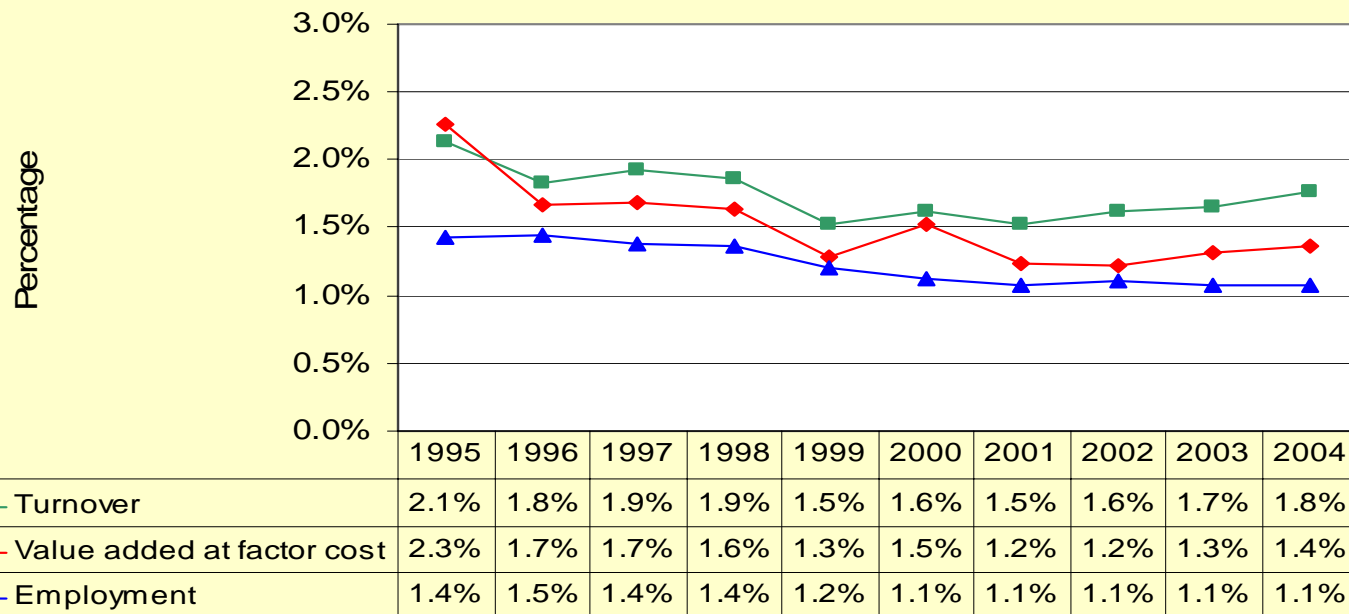
Siderurgia mondiale

Figure 8.1 - Rank of world steel companies in 2004



Siderurgia comunitaria

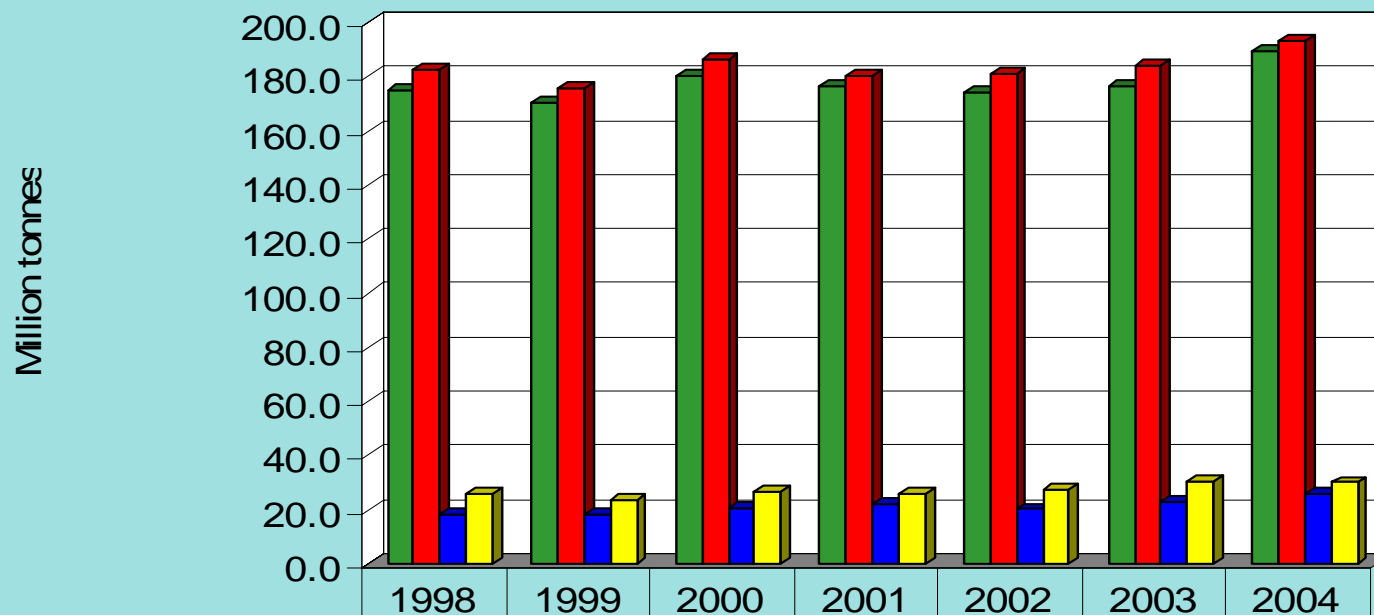
Figure 1.1 - EU25 - Share of Steel Sector in Manufacturing Total
(Partially estimated)



Percentage

Indicatori chiave

Figure 4.1 EU25 - Crude Steel Supply and Demand

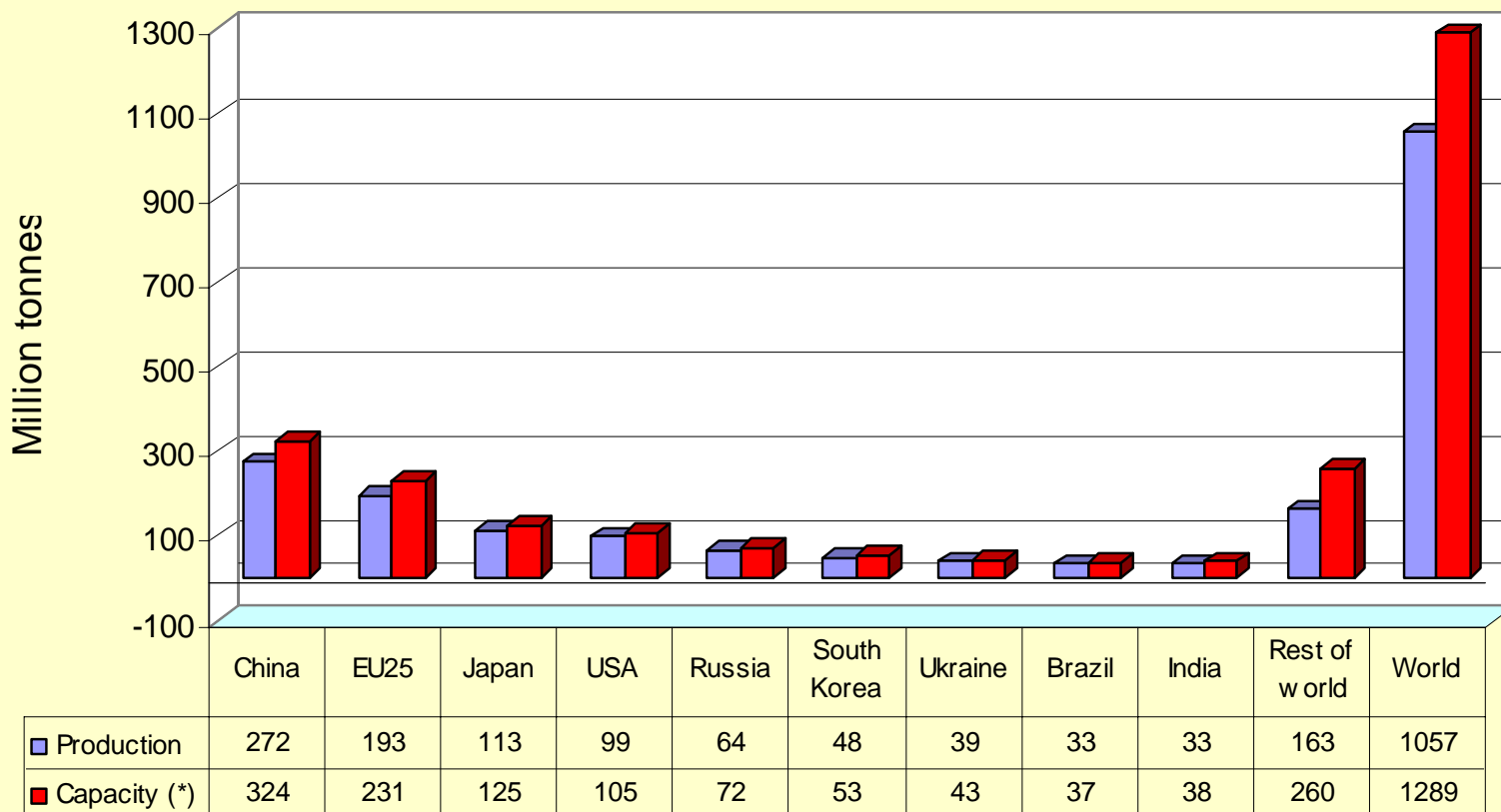


■ Consumption	175.1	170.4	180.1	176.5	173.9	176.6	189.1
■ Production	182.4	175.8	186.5	180.5	181.1	184.2	193.3
■ Imports	18.5	18.1	20.3	21.8	20.2	22.6	25.9
■ Exports	25.8	23.5	26.7	25.8	27.4	30.2	30.1

Million tonnes

Produzione e capacità

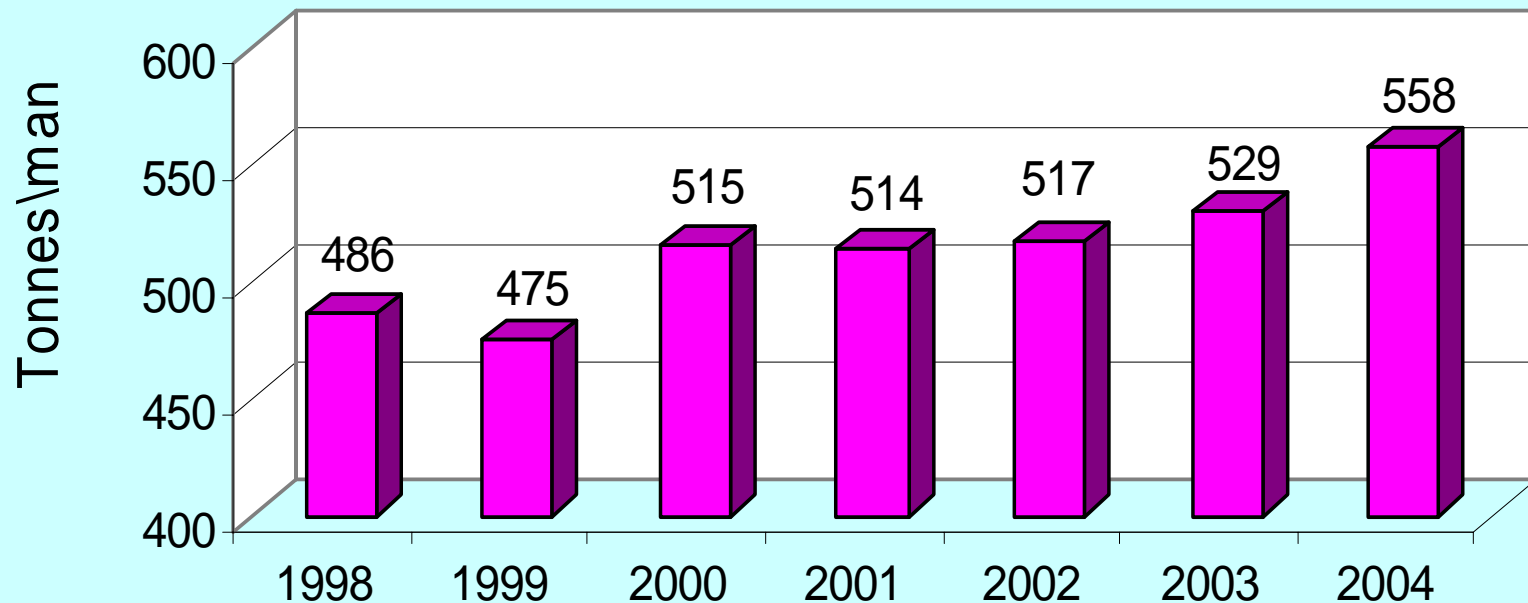
Figure 6.2 - Crude steel Production and Capacity by Country in 2004



(*) Partially estimated

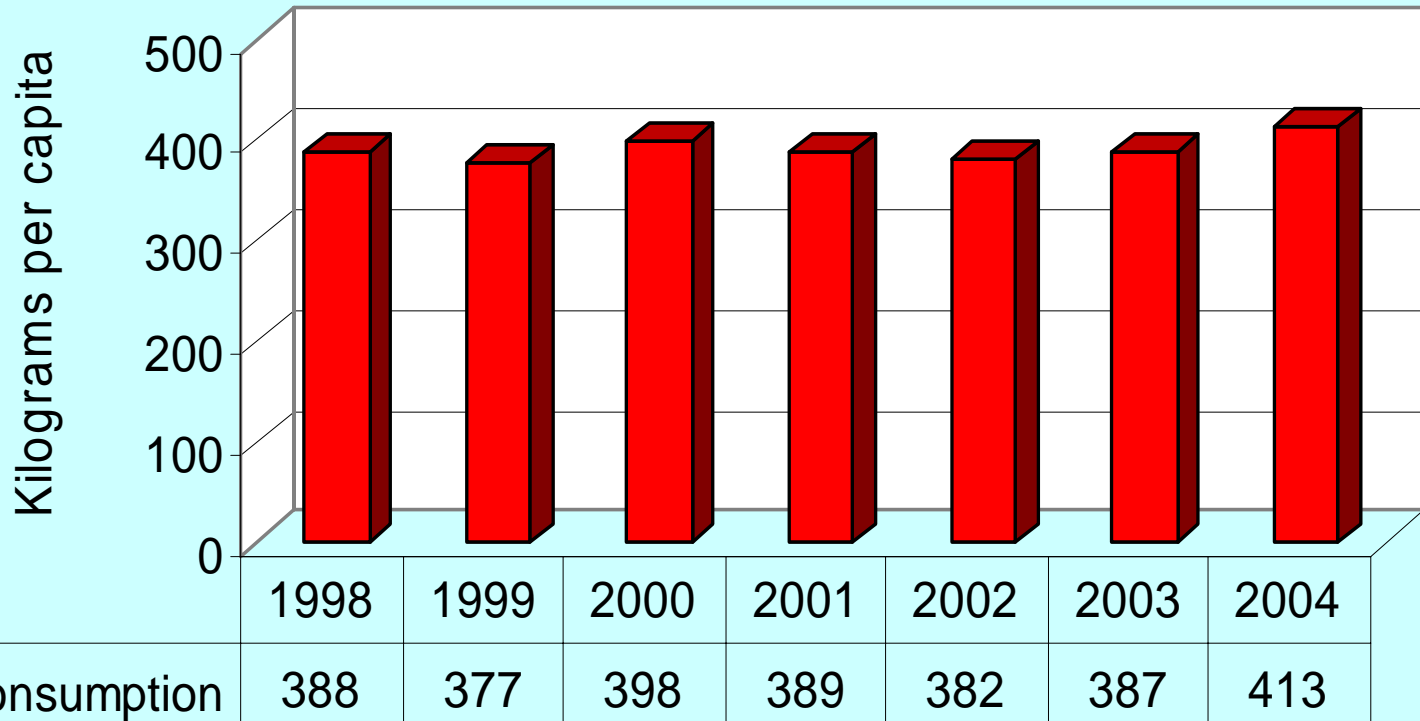
Produttività

Figure 4.3 EU25 - Steel Productivity
Crude Steel Output per employee
(2004: USA=580, Japan=650)



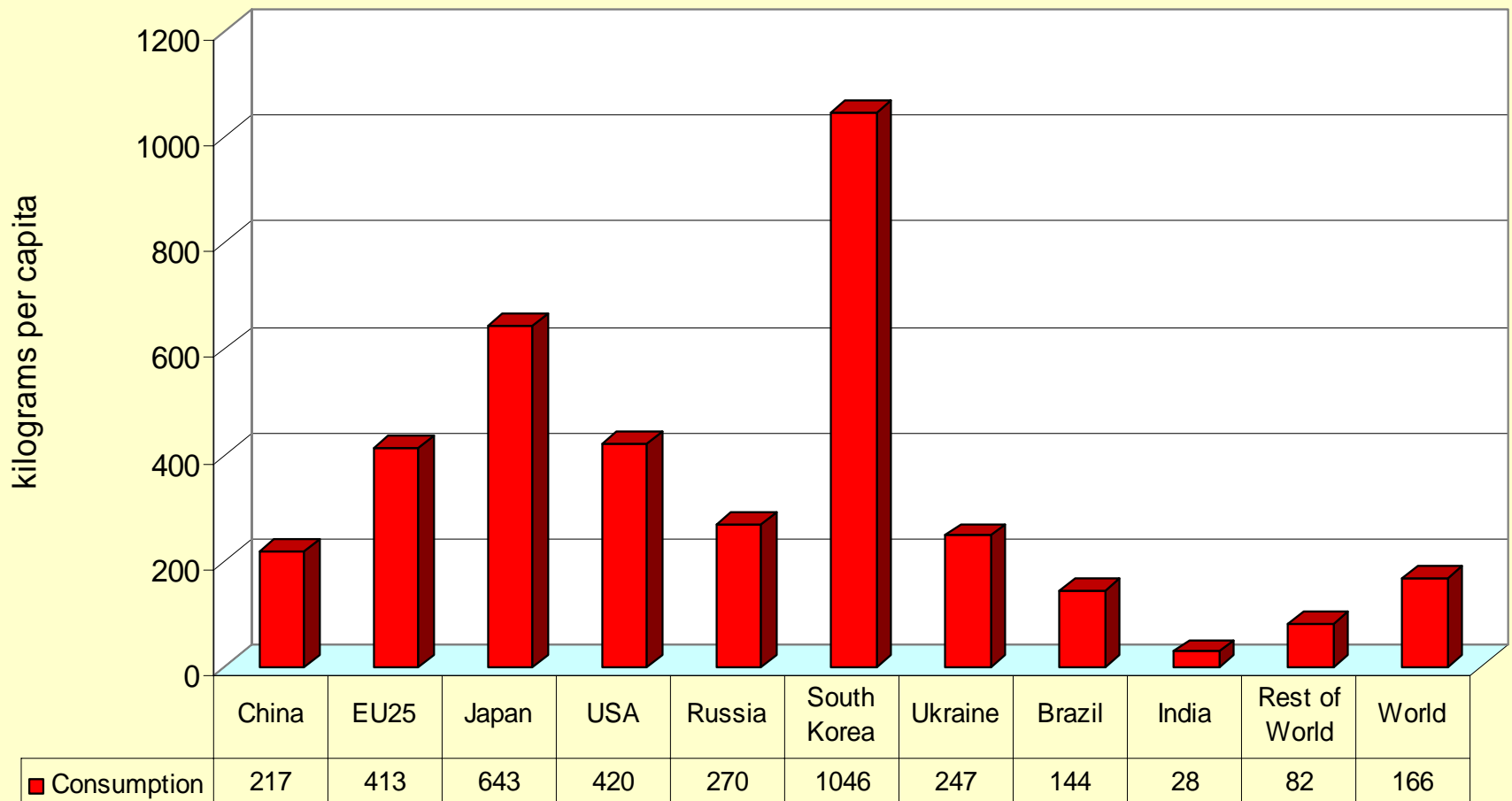
Consumo

Figure 4.2 EU25 - Consumption per capita of steel
(World average in 2004 = 166 kg per capita)



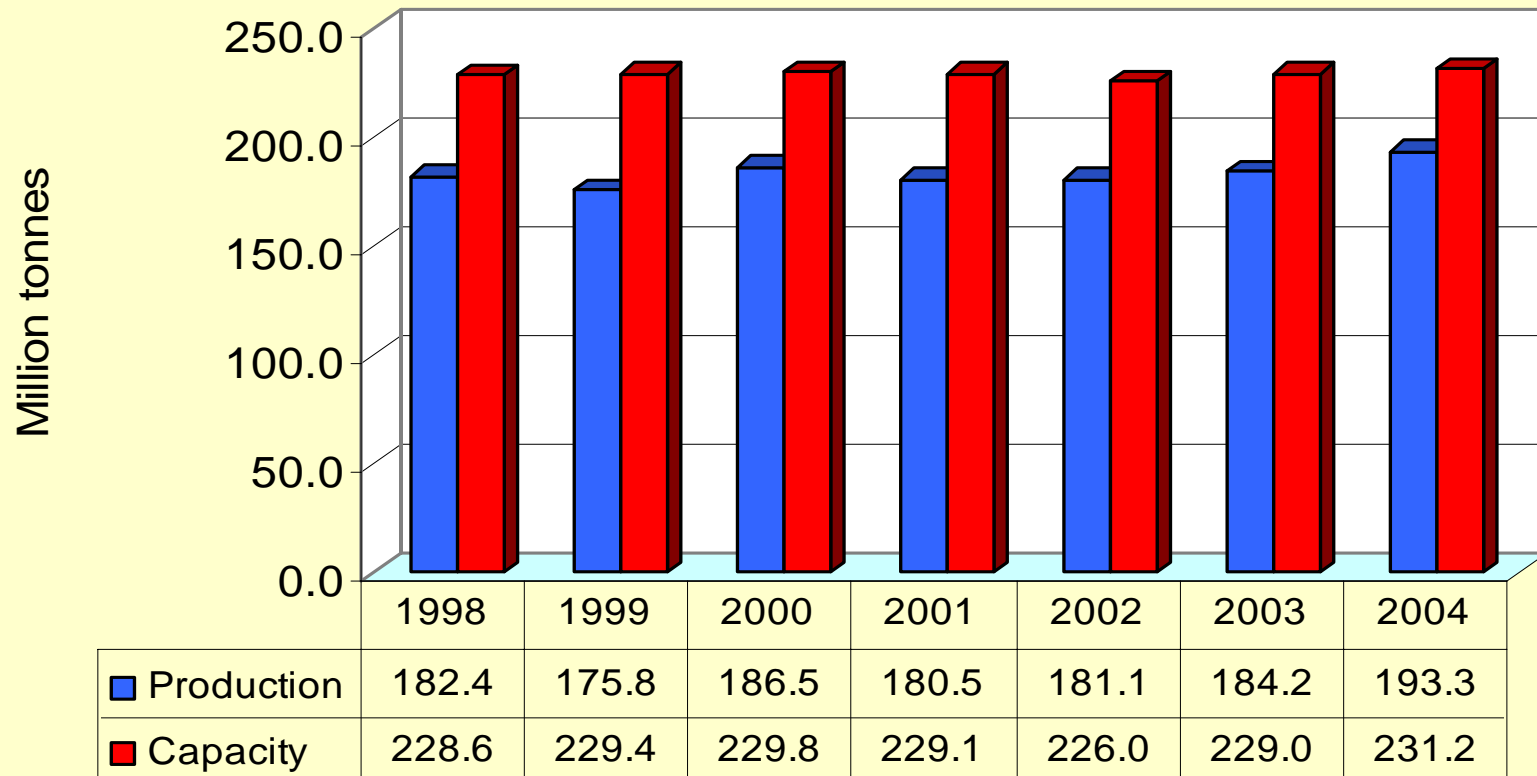
Consumo pro capite

Figure 7.5 - Steel Consumption per capita in 2004

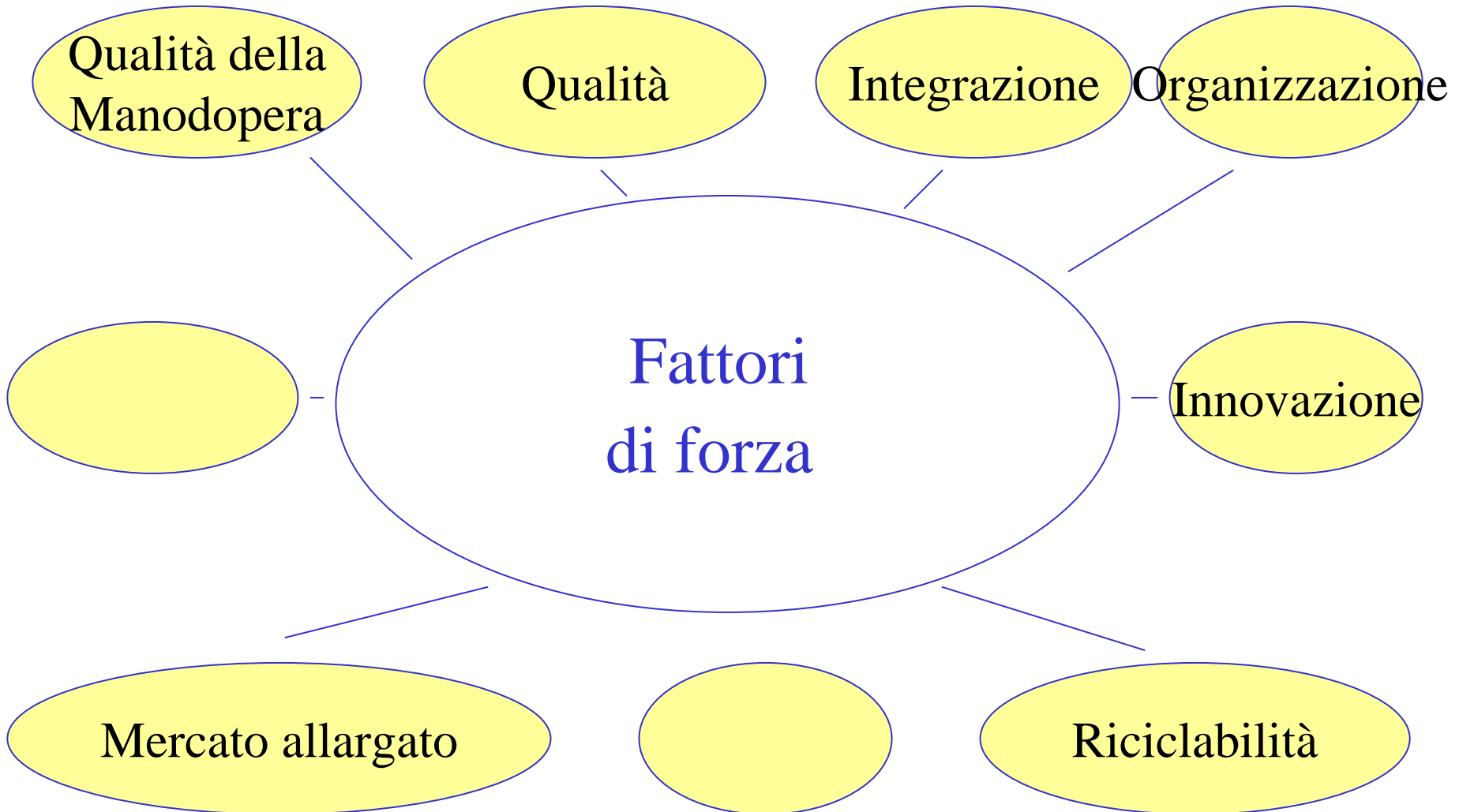


Capacità

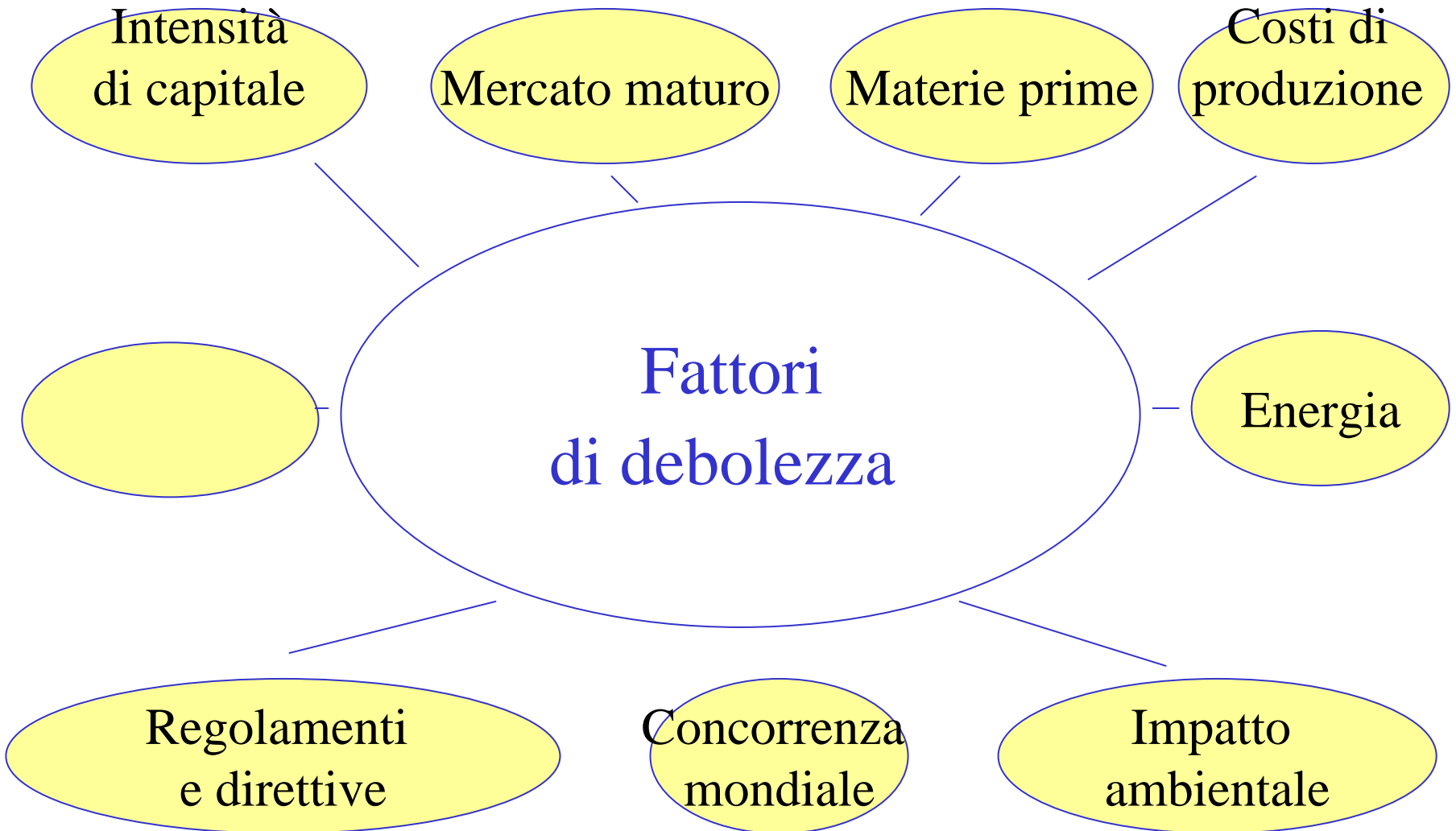
Figure 3.1 EU25 - Crude Steel Production and Capacity



Fattori di competitività

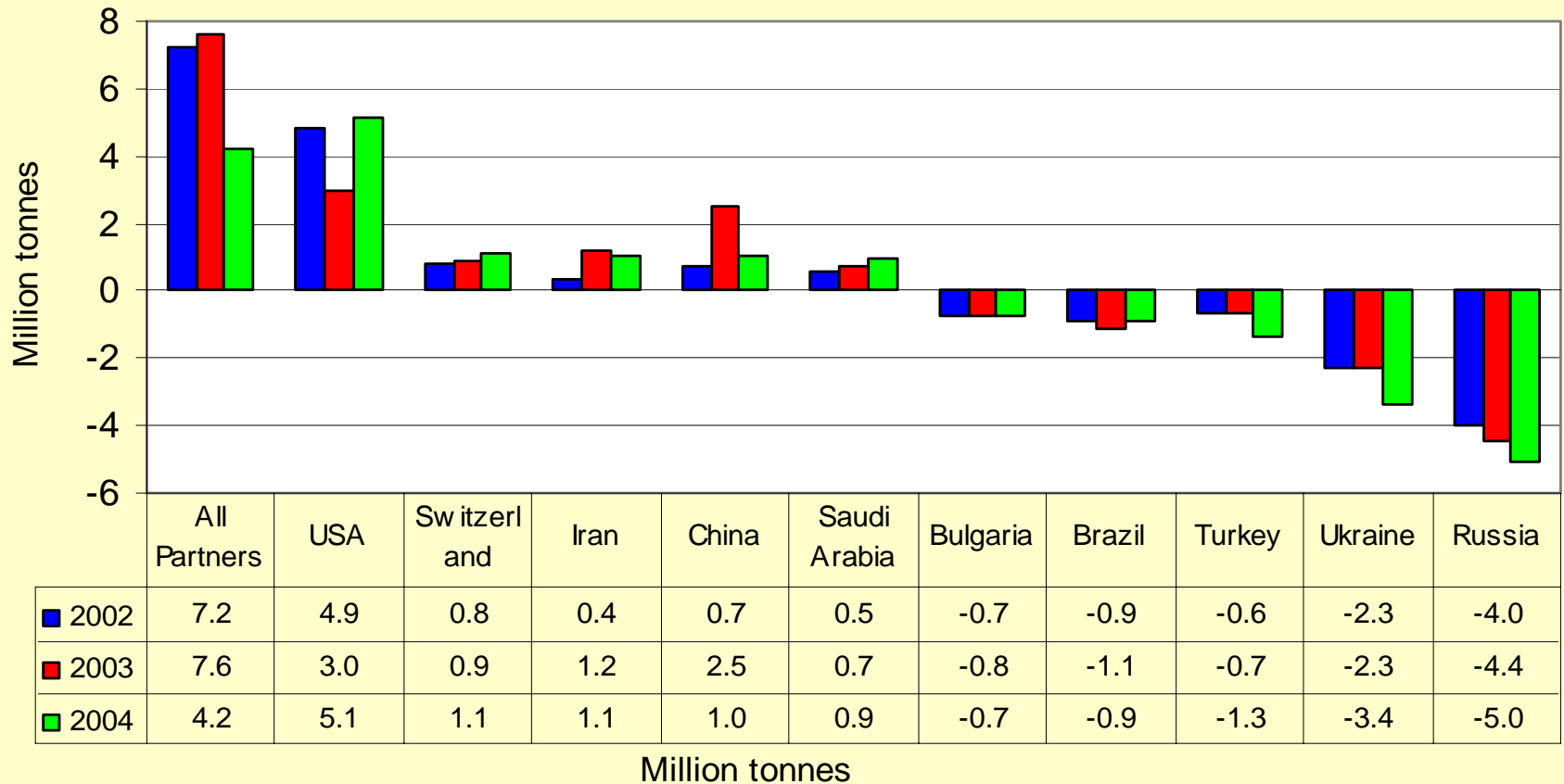


Fattori di competitività



Commercio

Figure 5.5 - EU25 net exports (+) and net imports (-) of steel by main partners (Partially estimated)



Materie Prime

Figure 11.1 - Average World Prices of Ferrous Raw Materials
1st Quarter 2000 = 100

